

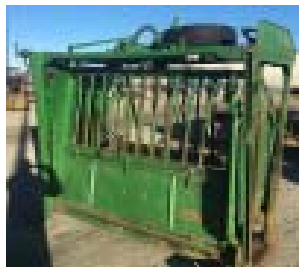
USED CHUTES



WRU943 10/15
Used WSI CHUTE
(modified to hydraulic)
"great shape", good floor,
hyd squeeze, headcatch,
tailgate, hyd controls
can be mounted on
either side.
\$3,000.00



WRUC2011 10/17
Used
FILSON
SQUEEZE CHUTE
New floor, LH controls
CONSIGNMENT
\$1,000.00



WRUC2098 11/18
Used
POWDER RIVER
CHUTE & TRAILER
w/brisket bar &
head restraint
CONSIGNMENT
\$2,000.00



WRUC3003 11/18
Used OLDER
SQUEEZE CHUTE
needs new floor,
w/self-catch headcatch,
"Sold As-Is"
CONSIGNMENT
\$350.00



WRUC3007 12/18
Used
THORSON
SQUEEZE CHUTE
RH Controls,
New Floor
CONSIGNMENT
\$2,500.00

USED CHUTES



WRUC3016 2/19
Used
POWDER RIVER
SQUEEZE CHUTE
CONSIGNMENT
\$1,200.00



WRU3017 2/19
Used
S04 Priefert
SQUEEZE CHUTE
\$2,900.00

USED SCALES



WRU1044 4/17
Used
EZ 210 DIGI-STAR
INDICATOR
Serial #080015880
@ SHOP
\$750.00

WRU2006 9/17
Used STOCKWEIGH LOCK-ON MONITOR
@ SHOP - \$750.00

NEW EZ WEIGH 51 INDICATOR

BRAND NEW EZ WEIGH 51 11/18
INDICATOR
"NEVER BEEN OUT OF THE BOX"
TRUEZW5 - \$785.00/**\$600.00**
4 load cells & J Box, 10,000 capacity
TRU826907 - \$1,850.00/**\$1,500.00**
Mounts on MMFSCALE - **\$450.00**
TOTAL PRICE
Was \$3,085.00/Now \$2,550.00

USED WINKEL CENTER FRAME

WRU2072 7/18
Used WINKEL CENTER FRAME WKLACF
\$60.00

Western Ranch Supply

Downtown: 303 N 13th St / Westend: 7305 Entryway Drive •PO Box 1497 •Billings MT 59103

406-252-6692 •1-800-548-7270

4000 River Drive North •PO Box 542 •Great Falls MT 59403

406-761-2160 •1-800-548-5855

USED EQUIPMENT

3/1/19

USED 2W EQUIPMENT

WRUC2081 9/18
Used 2W ALLEY SORT FRAME
CONSIGNMENT
TWW3652 - \$400.00

WRU3004 12/18
Used 2W 21' ALLEY W/PALP CAGE
\$3,000.00

USED CAKE FEEDERS



WRU3000 11/18
Used
2000#
CAKE FEEDER
\$2,000.00



WRUC3013 1/19
Used
T&S
TRIP HOPPER
CAKE FEEDER
CONSIGNMENT
\$1,850.00

USED CREEP FEEDER



WRUC3010 12/18
Used
K & K CREEP
FEEDER
150 bushel, Red
\$2,300.00

USED S.I. LINER

WRUC3002 11/18
S.I. FEEDERS LINER
new price \$1,250.00 / NOW \$625.00

USED GATE & PUMP



CONSIGNMENT
Both-\$7,000.00



WRUC2077 7/18
Used 9 ft. TURRETT
GATE & 220 PUMP

USED CALF TABLE



WRUC3014 2/19
Used
JOHNSON
CALF TABLE
"Good Shape"
CONSIGNMENT
\$1,300.00

USED TUB & ALLEY



WRUC3015 2/19
Used MORAN TUB & ALLEY
CONSIGNMENT
@ GTF - \$8,000.00

USED CALF WARMER



WRU3018 2/19
Used 110
CALF WARMER
NO Heater, just box
@ GTF
\$350.00

Western Ranch Supply

Downtown: 303 N 13th St / Westend: 7305 Entryway Drive • PO Box 1497 • Billings MT 59103

406-252-6692 • 1-800-548-7270

4000 River Drive North • PO Box 542 • Great Falls MT 59403 / 406-761-2160 • 1-800-548-5855

USED EQUIPMENT

3/1/19

USED SERVICE BOX



WRU792 ^{12/15}
Used OMAHA
SERVICE BOX
9' long w/tool boxes
60" cab to axle
@ SHOP
\$2,500.00

USED FLATBED



WRU2043 ^{4/18}
Used JIN
84x112 STEEL
FLATBED
w/ 3 tool boxes
"very good condition"
@ SHOP
\$2,100.00

HILLSBORO TRAILERS

USED & BRAND NEW
HILLSBORO TRAILERS FOR SALE
Assorted lengths available. Can order to specs. Used
Trailers have 12000# Tandem Dual Axles, LED lights
and drop down beaver tails with ramps. Some trailers
have a receiver hitch with light & electric brake plug
on tail of trailer.

Call for Pricing



Western Ranch Supply

Downtown: 303 N 13th St / Westend: 7305 Entryway Drive •PO Box 1497 •Billings MT 59103

406-252-6692 •1-800-548-7270

4000 River Drive North •PO Box 542 •Great Falls MT 59403 / 406-761-2160 • 1-800-548-5855

WESTERN RANCH SUPPLY

1/18/19

SHOP: 1615 6th Avenue North, Billings MT / 406-252-3342
 Downtown: 303 N 13th St / Westend: 7305 Entryway Drive ●PO Box 1497 ●Billings MT 59103
 406-252-6692 ●800-548-7270

MANURE SPREADERS



MIXMSTR#4107 12/18
 Used Farm Hand Trailer Pull Manure
 Spreader 145-A. 6' wide x 15' long.
**\$4,500.00**



MIXMSU#6041 9/16
 Kuhn 1170 Manure Spreader mounted
 on 1989 Ford L9000 truck
**\$45,000.00**

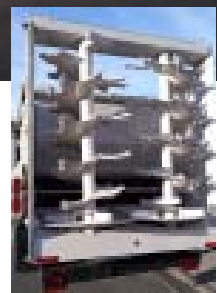


MIXMS#6062 10/18
 XHD 20 Morlang Manure Spreader.
 Horizontal 2 beater with a plastic floor.
 Mounted on a 1993 Kenworth T600.
 Vin #1XKADR9X3PJ596419
**\$65,000.00**

MANURE SPREADERS



MIXMST6064 10/18
 Myers VB 750 Vertical Beater Manure
 Spreader. Trailer pull with a plastic floor
 and a hydraulic slop gate. Needs a
 200HP tractor. SN#30VB75011
**\$37,500.00**



MIXMS#6068 12/18
 Kuhn PSC171V 21' Spreader w/vertical
 beaters. Has a 2-piece poly floor. Heavy
 duty drive. SNA21.
MIXTRUCK#6059
 Above mounted on 2007 Kenworth T-800.
 Has a 475 cat engine, 18-speed manual
 transmission, AD-246 suspension at
 50,000 LB rear & 20,000 front.
 VIN#1XKDDBOX87R933184.
**\$125,500.00**

MIXER TRUCKS W/BOXES



MIX14RTSU#4135 12/18
 Oswalt 3340 Mixer. Flighting is marginal & box needs some work. Truck runs but is rough.
\$7,000.00



MIX16RSU#6033 2/16
 1991 International w/new overhaul 466 engine w/502 Harsh Box, SS liner, Allison 653 automatic transmission
\$60,000.00



MIX14RTSU#6036 3/16
 Harsh 406 Mixer mounted on 1982 International Cab Over w/466 engine, Allison 653 automatic transmission. Mixer is hydraulic driven
\$50,000.00

MIXER TRUCKS W/BOXES



MIX16RSU#6040 6/16
 Used RMH 310 4 auger mixer mounted on 1988 Peterbuilt
\$18,000.00



MIX14S#6052 1/18
 Kuhn Knight 4042-4 auger Mixer. Bottom augers rebuilt, top augers 50%, 400 cubic ft. Mounted on a 1993 International with 466 diesel engine & MT 653 Allison transmission
\$45,000.00



MIX16SU#6053 12/17
 Oswalt 3 auger 420 Mixer. Augers 70%, flighting on top & bottom Vin#N80BVDK0768 Mounted on Ford 800 Truck with a 370 gas engine, 5-speed manual transmission with 2-speed rear end (Orange) Vin#N80BVDK0768
\$35,000.00

MIXER TRUCKS W/BOXES



MIX14RTSU#6054 12/18
 Harsh 302 Mixer w/single auger discharge. Flighting on all 4 augers is like new. Discharge flighting 50%. Mounted on a 1970 International 1600 Truck w/4-speed manual tranny w/2-speed rear end. Has a gas engine. VIN#416060H060296
\$22,000.00

MIXER TRUCKS W/BOXES



MIX15S#6071 1/19
 BTC155 Kuhn 4-auger BOC. 4-auger discharge, SS bottom liners, rubber extensions, steel fenders, ANDEZ 2500 DigiStar Scale w/outside readout.
MIXTRUCK#6072
 2002 International 4400. DT466 diesel engine, 3000 world Allison automatic transmission, air shift 2-speed secondary trans.
\$126,000.00

MIXER TRUCKS W/BOXES



MIX16S#6066 10/18
 Used Kuhn Knight 4052 Auger Mixer. Has stainless steel bottom liners, bottom augers are 60% & top augers are reflighted. Mounted on a 1987 International with a 466 Diesel Engine & a 653 MT 653 Allison transmission.
\$55,000.00

MIXER TRAILER UNITS



MIX14RTSU#4158 10/11
 NT 1260A Feeder Wagon. 20 ft. w/discharge, weigh tronics 640 XL scale w/3-point 2-1/4 weigh bars, live double floor chain. Ser #NT7031
\$15,000.00



MIXTRL#6000 12/18
 Factory trailer for a Kuhn 4063 Mixer.
\$8,000.00

MIXER TRAILER UNITS



MIXIOSU#6003 5/14
 Schwartz Model 850 Trailer, 3-auger w/chain & flat discharge, 540 PTO, auger reflighted
\$10,000.00



MIXIT#6018 8/16
 VTC 1120 Trailer Vertical Mixer with side gravity discharge. Door left & rear SS liner, 30" w/1000 RPM, 1 3/8 - 21 tooth spline
\$107,000.00



MIX14TU#6049 5/17
 Oswalt 400 trailer pull Mixer with DigiStar Scale. 4-auger mixer w/re-conditioned chain discharge.
\$20,000.00

TRUCK OR BOX ONLY



MIXMSTR#4127 12/18
 2004 Freightliner Truck w/Mercedes-Benz diesel engine. Has a 3060P Allison tranny w/2-speed secondary transmission. 23,000 GVW. VIN#1FVACKCS65HN93832
\$27,000.00



MIX16SU#6070 12/18
 MM18052 4-auger Mixer Box Only. Passenger side bottom auger is new. Flighting on the other 3-augers is 50%. Box is hydrostac drive w/electric over hydraulic power for the door & spout. Gravity discharge
\$70,000.00